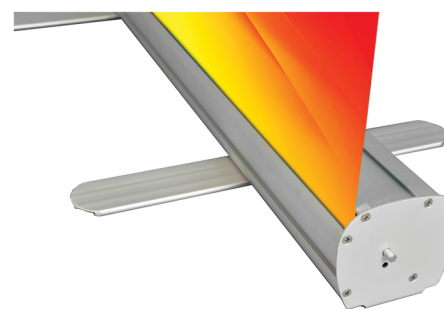


BASIC RETRACTABLE BANNER STAND – 33.5" x 78"

Benefits:

- Dual support feet secure the stand while in use and swivel close for easy storage
- Carrying case included
- A steel plate reinforced body adds stability to the stand and structure to the frame for improved durability
- Slim design makes transporting and storing the stand hassle free
- Stand comes with a pre-taped poly leader for quick installation
- Classic design appeals to a broad customer base
- Recommended banner material: Fellers Black Label PE Gray Back
- Material length should be 6-8" longer than the display area for a secure material installation



LUXURY RETRACTABLE BANNER STAND – 33.5" x 80"

Benefits:

- Wide body design creates more stability for the stand while in use
- Enhanced design creates a professional looking display
- Carrying case included for added protection and ease of transport
- Stand comes with a pre-taped poly leader for quick installation
- Recommended Banner Material: Fellers Black Label PE Gray Back
- Material length should be 6-8" longer than the display area for a secure material installation

